



AF WATER
SYSTEMS
澳熙水系统



Contents



01 -02

•
About Us

03 -06

•
UFF Jet Wash® Regenerative Media Filter

07 -08

•
AF Water Control® Automatic Filtration Controller

09 -12

•
AF Water Control® Water Analyzer and Chemical Dosing Controller

13 -14

•
AF Water Control® Pump Controller

15 -17

•
AF Water Control® Automatic Water Treatment System

18 -21

•
Show Cases

About Us

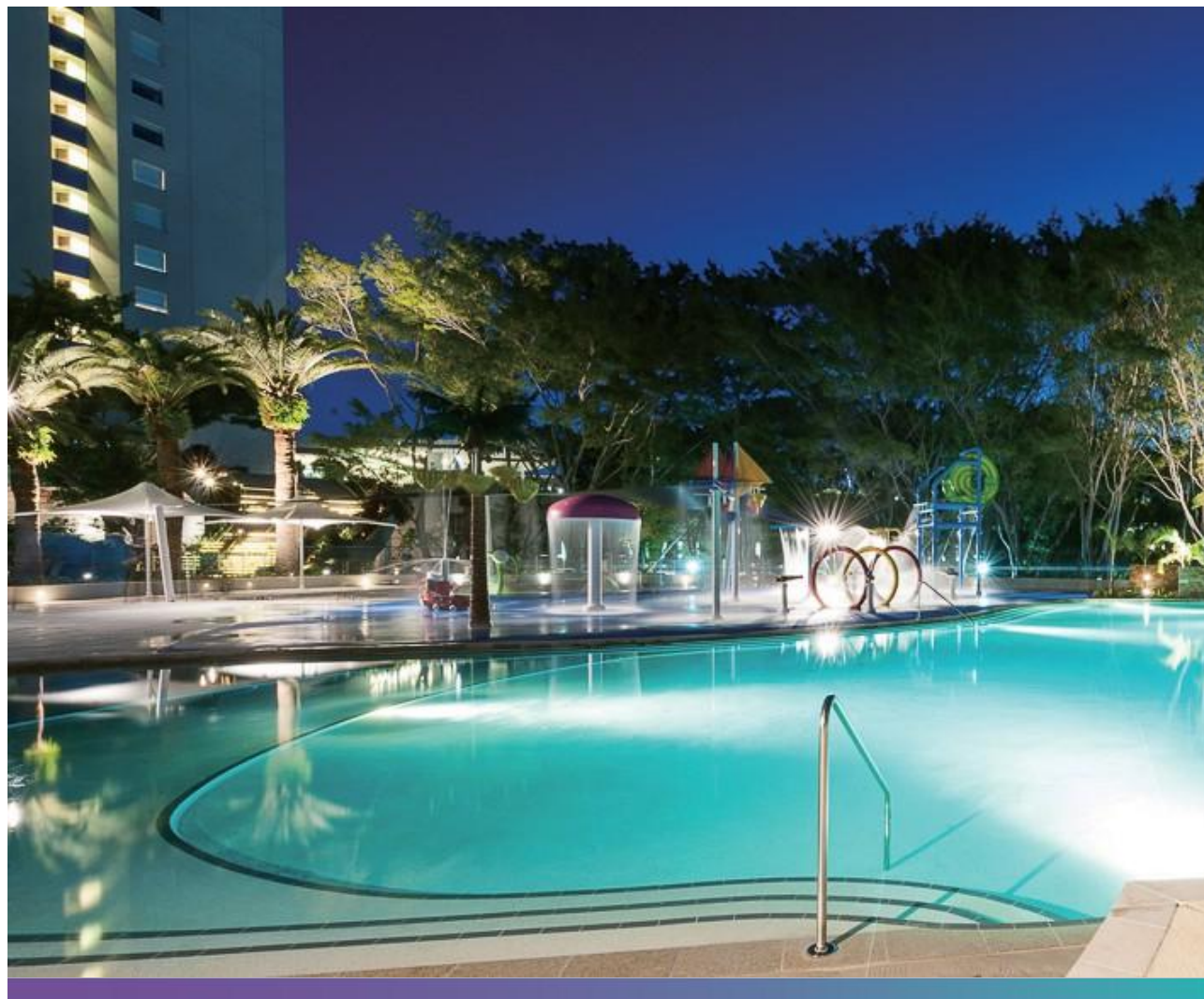
AF Water System

AF water system equipment Co.Ltd focuses on providing exceptional filtration efficacy, professional automatic control system and online monitoring & chemical dosing control services to all kinds of water treatment business like swimming pools, water parks, health venues, aquariums, farms, fountains and waterscapes.

In the past 10 years, we have been committed to the research and development of Eco-friendly, energy-efficient, and intelligent high-tech products; we also concentrate on promoting practical, compact plant room design. Our automatic control system is popularized and well approved among Queensland, Gold Coast, New South Wales, and Tweed Heads of Australia, as well as in China, South Asia, and Europe.

Our products include UFF (Ultra-Fine Filtration) Jet Wash® Regenerative Media Filter, AF Water Control® Automatic Filtration Controller, AF Water Control® Water Analyzer and Chemical Dosing Controller, AF Water Control® Pump Controller, and the combination of above four: AF Water Control® Automatic Water Treatment System.





Despite having the leading technology in automatic control,our innovative research team never stop learning and striving for perfection. We always keep our customers' needs top of mind,and committed to developing products and solutions that will withstand any water treatment challenge in the future. We will be devoted to the concepts of sustainable environment,energy-efficiency,as well as intelligent&innovative technology as our ultimate goal,and aim to provide our customers with comprehensive and more advanced products.

UFF Jet Wash® Regenerative Media Filter

Provides superior drinking water grade filtration

Fabricated with food grade 304 stainless steel, the UFF Jet Wash® Regenerative Media Filter uses perlite, a safe and stable filter media, to remove particles down to 1 micron, while sand filter only removes impurities above 15-20 micron. The filtration efficacy is significantly improved with the UFF Jet Wash® Regenerative Media Filter, which brings much safer, much cleaner and clearer water to recreational water applications like swimming pool, water park, hot spring, fountain. Along with the AF Water Control® Automatic Filtration Controller, the combination can make the filtration even more efficient while lower the operational costs.

UFF Jet Wash® Regenerative Media Filter can effectively capture virus, as it removes particles down to 1 micron in water. Meanwhile, some viruses cannot be captured by sand filter as they range from 18-450 micron. The UFF Jet Wash® Regenerative Media Filter also removes parasites with a diameter of 3-5 micron like Cryptosporidium, which always gets away from sand filter. The UFF Jet Wash® Regenerative Media Filter can delay the increase in turbidity as well, which reduces the chemical consumption. The exceptional filtration efficacy of this filter also makes flocculant obsolete. Such superior filtration effect stands out even more with larger treatment volume, the more water the filter treats, the more costs it saves.



UFF Jet Wash® Regenerative Media Filter

Eco-friendly, Energy-efficient

Up to 90% less water wasted in backwash

UFF Jet Wash® Regenerative Media Filter excels in environmental protection and energy saving, as there is no backwash and the filter media can be recycled without draining tons of water. With our patented Jet Wash design, the media along with the trapped particles can be washed off the filter elements to reform a new coating for filtration. Only when the media is saturated with impurities, which pushes the water pressure to the alert level, then would the filter tank be drained to fill in new media. In general, the media only needs to be replaced once a month. In contrast, the traditional sand filter needs to be backwashed constantly (around once a week) to remove the impurities trapped in the tank, which consumes about 3 times of water volume to the filter area each time. Compare to sand filter, UFF Jet Wash® Regenerative Media Filter can save up to 90% water wasted in backwash. The entire regeneration process can be activated and completed automatically when the filter is connected to our AF Water Control® Automatic Filtration Controller.

Up to 30% less chemical usage

Without the backwash process, UFF Jet Wash® Regenerative Media Filter can reduce the waste water and make-up water dramatically, up to 30% costs of the chemicals and fuel for re-heating can be saved.

Up to 75% Savings on Space and construction cost

The filter area of UFF Jet Wash® Regenerative Media Filter is about 4 times to that of sand filter. At the same filtration rate, it means smaller footprint, thus the saving of construction cost; the weight of Jet Wash filter tank is greatly reduced compared to sand filter, it helps to lower the cost for load-floor engineering. The piping work is less complicated, and the drain pipe is shorter, which saves the cost of labour as well.



UFF Jet Wash® Regenerative Media Filter

Up to 50% less energy consumption

With the same filtration rate, the water pressure of the Jet Wash filter tank is much lower than that of the sand filter tank, the water comes through a layer of media coating around 3mm thick, at a designed standard filtration rate of $3\text{m}^3/\text{m}^2/\text{hr}$, that makes it a low-speed filter, hence the required power of the pump is smaller than the sand filter. For water parks with multiple attractions, the energy-saving effect will be more significant.

10 years of Warranty

UFF Jet Wash® Regenerative Media Filter tank is made of 304 or 316L food grade stainless steel, which can withstand long-term pool water immersion without rusting. All accessories are made of acid and alkaline resistant materials, to ensure the long-term stability and effectiveness of the tank. The UFF Jet Wash® Regenerative Media Filter is equipped with two visual windows, which are convenient for observing inside the tank at any time; the Jet Wash function makes it free from massive cleaning the entire lifespan.



Specifications of UFF Jet wash filters

T Series							
Model	Tank Size	Pool Water Volume (4hr turnover)	Filter Area	Flow rate	Pump Recommend (Waterhead 14m)	Perlite	Influent
	m m	@3m ³ /m ² /hr	m ²	m ³ /hr	3 phase motor	kg	Efluent size
MFT-810	Φ810	559	47	140	11KW	18	DN200
MFT-860	Φ860	639	53	160	11KW	22	DN200
MFT-920	Φ920	725	60	181	15KW	24	DN200
MFT-970	Φ970	816	68	204	15KW	27	DN200
MFT-1020	Φ1020	912	76	228	15KW	30	DN250
MFT-1070	Φ1070	1013	84	253	15KW	33	DN250
MFT-1120	Φ1120	1119	93	280	15KW	36	DN250
MFT-1180	Φ1180	1231	103	308	18.5KW	40	DN250

M Series							
Model	Tank Size	Pool Water Volume (4hr turnover)	Filter Area	Flow rate	Pump Recommend (Waterhead 14m)	Perlite	Influent
	m m	@3m ³ /m ² /hr	m ²	m ³ /hr	3 phase motor	kg	Efluent size
MFM-660	Φ660	221	18	55	4KW	8	DN150
MFM-710	Φ710	261	22	65	4KW	9	DN150
MFM-760	Φ760	305	25	76	5.5KW	10	DN150
MFM-810	Φ810	352	29	88	5.5KW	12	DN150
MFM-860	Φ860	403	34	101	7.5KW	13	DN150
MFM-920	Φ920	456	38	114	7.5KW	15	DN200
MFM-970	Φ970	514	43	128	7.5KW	17	DN200
MFM-1020	Φ1020	574	48	144	11KW	19	DN200

S Series							
Model	Tank Size	Pool Water Volume (4hr turnover)	Filter Area	Flow rate	Pump Recommend (Waterhead 14m)	Perlite	Influent
	m m	@3m ³ /m ² /hr	m ²	m ³ /hr	3 phase motor	kg	Efluent size
MFS-450	Φ450	66	6	17	2.2KW	3	DN80
MFS-500	Φ500	85	7	21	2.2KW	3	DN80
MFS-550	Φ550	107	9	27	2.2KW	4	DN80
MFS-600	Φ600	130	11	33	2.2KW	5	DN100
MFS-660	Φ660	156	13	39	3KW	5	DN100
MFS-710	Φ710	185	15	46	4KW	6	DN100
MFS-760	Φ760	215	18	54	4KW	7	DN100
MFS-810	Φ810	249	21	62	4KW	8	DN150

AF Water Control® Automatic Filtration Controller

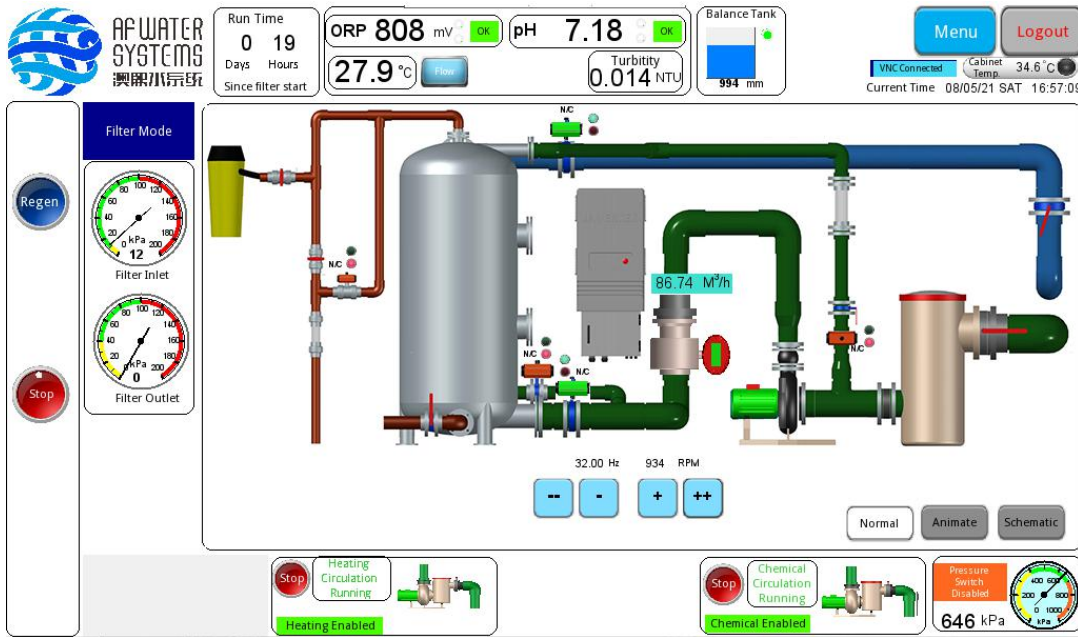
More Intelligent

State-of-the-art Automatic Filtration Controller

With a 10 inch high-resolution LCD touch screen, AF Water Control® Automatic Filtration Controller is easy to use. A neat system menu and a friendly interface make the automatic process quick and simple, which minimizes the operation in the plant room and reduces the maintenance afterward. Not only is AF Water Control® Automatic Filtration Controller suitable for UFF Jet Wash® regenerative media filter, but is also adaptable to Defender regenerative media filter, and it fits into the auto control system for high-speed sand filter as well.



AF Water Control® Automatic Filtration Controller



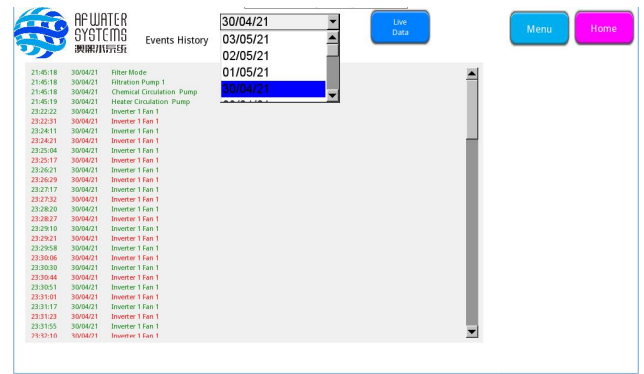
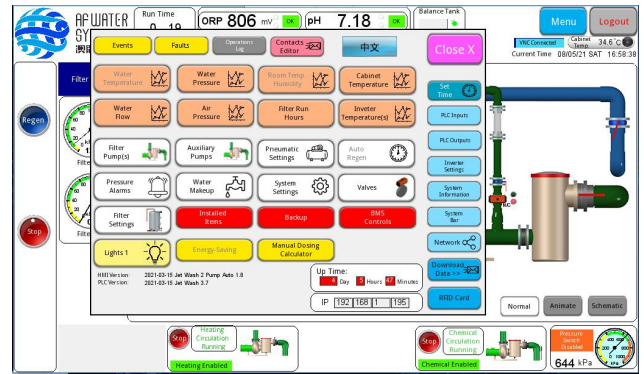
AF Water Control® Automatic Filtration Controller

Featured with internet and remote monitoring control, AF Water Control® Automatic Filtration Controller is accessible through various connections such as mobile phones, laptops, computers and so on. A master account can manage several operators, allowing multiple visits to the device at the same time; meanwhile, a master account can connect to multiple devices for general management as well.

AF Water Control® Automatic Filtration Controller records detailed operation data and backlogs them to the cloud. Any abnormality picked up by the system will trigger an instant alarm and send email or phone message to operators, who can login the control system remotely, and use the system log or chart for trouble shooting, fix the problem and close the alarm.

The data provided by the AF Water Control® Automatic Filtration Controller can be used for data analysis. By analyzing the peak and trough curves in the system, a better and more efficient operation plan can be developed by adjusting the time and working period of the devices, to save more energy.

The data ports are reserved in the Controller for the water quality monitoring and dosing system, UV lamp system, ozone disinfection system, heating and dehumidification system, lighting system, etc. All the devices of the entire plant room can be monitored in this system altogether.



AF Water Control® Water Analyzer and Chemical Dosing Controller

AF Water Control® Water Analyzer and Chemical Dosing Controller adopts leading technology from Australian, combining sensors, touch screen and remote monitoring. This controller connects all dosing and sterilizing devices, and manages the dosing automatically and accurately by controlling the dosage and setting the time duration, eventually it prevents accidental injury and environmental contamination caused by maloperation, while keeping the pool water parameters within the set range at a minimum cost.

Internet + remote control monitoring mode makes the data available for sharing and tracking, which helps to ease the maintenance, the management and the government health inspection. One master account can connect and manage multiple controllers around the world to facilitate the unified management of all parties.



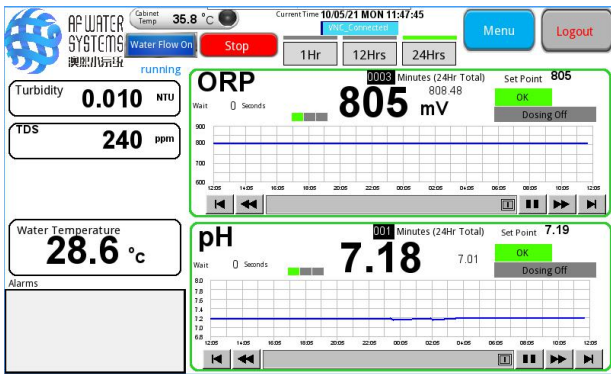
Design and Function

AF Water Control® Water Analyzer and Chemical Dosing Controller has a transparent cell, which can accommodate four sensors at the same time. The water sample is visible through the cell. Besides temperature, PH (PH), ORP (oxidation-reduction potential), TDS (total dissolved solids), residual chlorine and turbidity, other parameter detectors can also be added for different occasions. This controller is adaptable to most of the dosing devices on the market. Such flexibility makes it suitable for large recreational water applications like water parks, aquariums and swimming pools, and fit for small aquatic venues in schools, hotels, villas, spa, fountains and waterscape as well.



AF Water Control® Water Analyzer and Chemical Dosing Controller has a 7-inch high-resolution LCD touch screen, the setting and operation are simple and fast with a user friendly interface. The real-time reading on the screen can be uploaded to the cloud by default setting, to ensure the system operation and performance records can be accessed and monitored through the mobile phone, computer or tablet in a timely manner.

AF Water Control® Water Analyzer and Chemical Dosing Controller

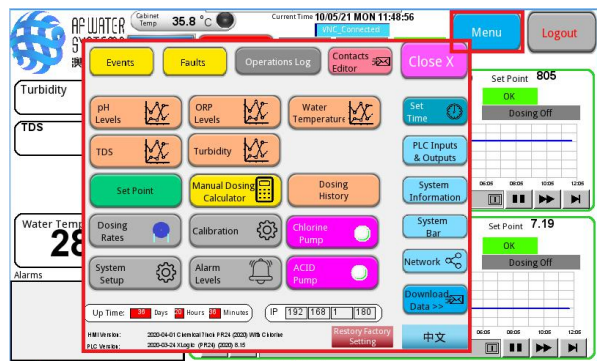


AF Water Control® Water Analyzer and Chemical Dosing Controller has a built-in security mechanism. Alarm and dosing cut-off can be triggered by water flow switch in the circulation pool, circulating pump fault, insufficient reagent alert, dosing time and duration setting, or dosing pump fault.

Widely-used plug-in sensor, preinstalled cable, sensitive touch screen and preset operating system altogether make the installation, usage and daily maintenance of the system simple and fast.

AF Water Control® Water Analyzer and Chemical Dosing Controller with RS485, Modbus TCP communication interface can be used alone as water quality monitoring device to assist the manual dosing control, it can also be used along with any dosing and sterilizing devices on the market, or to built into the entire plant room automatic control system.


We recommend to use AF Water Control® Water Analyzer and Chemical Dosing Controller along with UFF Jet Wash® Regenerative Media Filter to drive the water filtration efficacy, the water quality, cost and energy saving to the extreme.



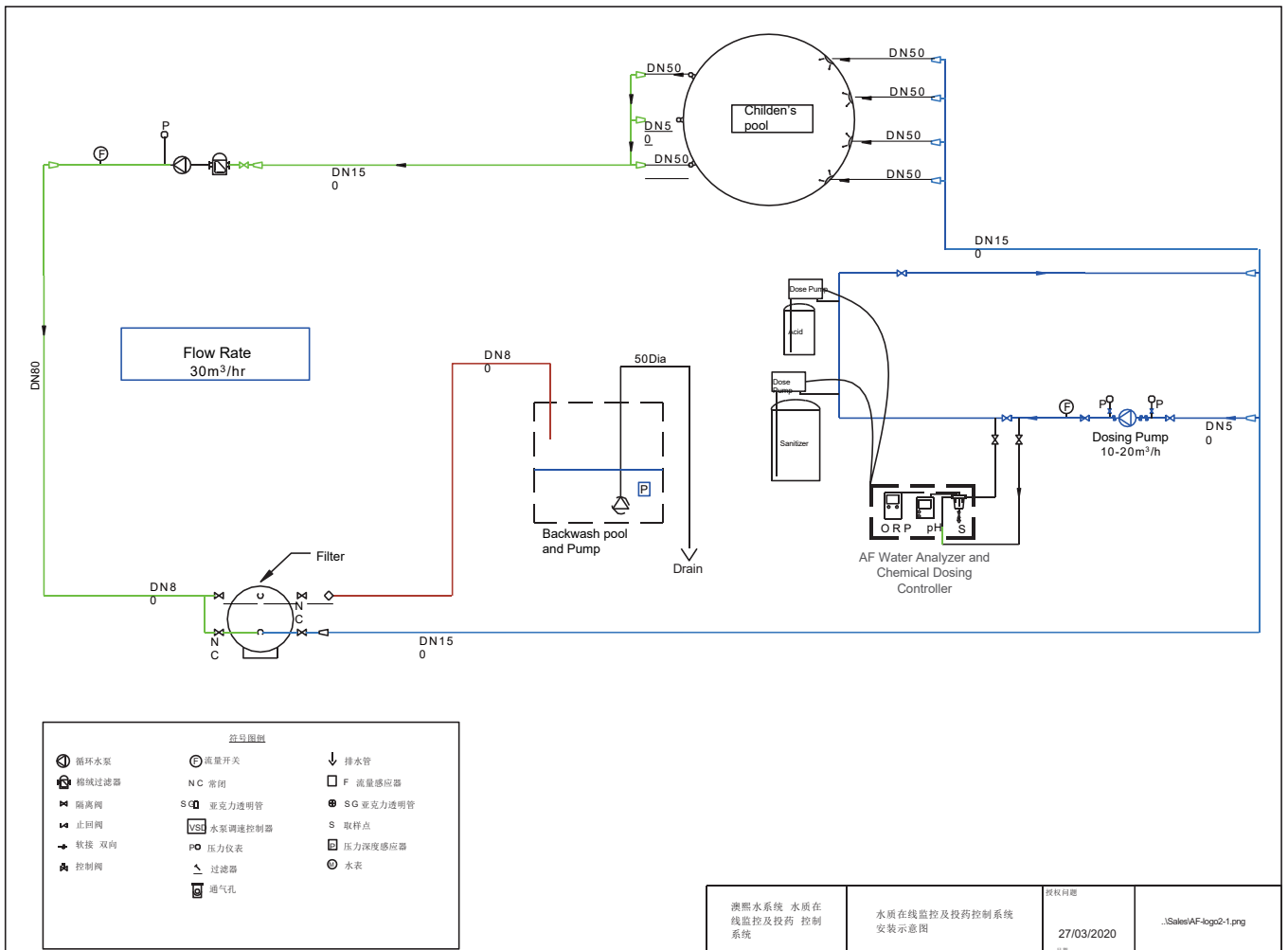
Product features

- 7 inch high resolution LCD sensitive touch screen, intuitive interface, simple operation and easy maintenance;
- Universal standard sensor, easy to replace and maintain;
- Easy access and remote control through mobile phone, computer or tablet;
- Can be used along with various dosing and sterilizing device;
- Built-in security mechanism.

Specifications of AF Water Control® Water Analyzer and Chemical Dosing Controller

Specifications of AF Water Control® Water Analyzer and Chemical Dosing Controller		
Model	Product Image	Tested Parameter
AFD-PO		Temp, PH,ORP,
AFD-POF		Temp, PH,ORP,FAC
AFD-POT		Temp, PH,ORP,TDS
AFD-POFT		Temp, PH,ORP,TDS,FAC
AFD-POTFT		Temp, PH,ORP,TDS,FAC,Turbidity
AFD-POFTT		Temp, PH,ORP,FAC,Turbidity

Schematics of Installation



AF Water Control® Pump Controller

AF Water Control® Pump Controller is designed specifically for swimming pool water treatment. Adaptable to any three-phase water pump on the market, it can control the water pump with power of 18.5kw and below (pumps with higher power can be customized). By adjusting the frequency of the motor, the speed of the motor varies to meet different filtration requirements in different time periods, so as to save more energy.

AF Water Control® Pump Controller monitors the water pressure and flow rate at the water inlet/outlet of the pump. When the water pressure is not enough or the water flow is off, the power supply will be cut off automatically to prevent the pump from idling, protect the pump and prolong its life span.

AF Water Control® Pump Controller can adjust the power factor of the motor, so that the motor can work at its full efficacy.




AF Water Control® Pump Controller has built-in harmonic processor, which not only protect the power supply end and motor, but also protect the other machinery in the plant room from the interference of electromagnetic harmonic, it reduces the noise from the pump and extend the service life of the pump and other devices significantly.

AF Water Control® Pump Controller with independent Residual Current Circuit Breaker(RCCB) and 3-phase Voltage Relay cuts off the power supply to protect the motor when the circuit fault.

AF Water Control® Pump Controller with RS485 signal output can be connected to any other auto control system of the plant room or ideally our Automatic Filtration Controller, through which the water pump can be controlled directly with the real-time readings. With the monitoring and cloud backlog functions of Automatic Filtration Controller, the alarm and operation records of the AF Water Control® Pump Controller are also available for afterwards maintenance.

Specifications of Pump controller

Specifications of Pump controller		
Model	Product Image	Parameter
AFI-2.2		2.2KW, 3 Phase, 380V, RCCB, Phase Failure Relay, RS485
AFI-5.5		5.5KW, 3 Phase, 1450 rpm, 380V, RCCB, Phase Failure Relay, RS485
AFI-7.5		7.5KW, 3 Phase, 1450 rpm, 380V, RCCB, Phase Failure Relay, RS485
AFI-11		11KW, 3 Phase, 1450 rpm, 380V, RCCB, Phase Failure Relay, RS485
AFI-15		15KW, 3 Phase, 1450 rpm, 380V, RCCB, Phase Failure Relay, RS485
AFI-18.5		18.5KW, 3 Phase, 1450 rpm, 380V, RCCB, Phase Failure Relay, RS485



AF Water Control® Automatic Water Treatment System

AF water system has been advocating natural simplicity and environmental sustainability, we have been and will continue to be committed to the research and development of eco-friendly, energy-efficient, and intelligent high-tech products; and concentrates on promoting practical, compact plant room design as well.

AF Water Control® Automatic Water Treatment System is the package of our 4 products, it represents the compact and practical design of AF water system. Based on the actual conditions of each project and the requirements from every individual customer, the entire control system will be designed from the perspective of energy conservation, practicability, health and safety, to bring our customers significant savings on both upfront investment and operation costs afterward, as well as the easy maintenance for swimming pools, water parks, entertainment and sports venues, aquariums, farms, fountains and waterscapes.

AF Water Control® Automatic Water Treatment System works for both new facilities and upgrade on older ones, It brings intelligent automation control into the plant rooms, making the management of the plant rooms easier and more modernized.



AF Water Control® Automatic Water Treatment System

Design and Functionality

AF Water Control® Automatic Water Treatment System is an overall control system , which basically can include all possible features such as the water filtration and circulation ,disinfection, heating and dehumidification.

AF Water Control® Automatic Water Treatment System monitors the status of the water pump, filter, dosing device, UV disinfection lamp, ozone disinfection machine, heat pump, dehumidifier and other devices connected to the plant room by collecting the sensor signals from each of them. Through the system setting , the entire plant room runs in automation to keep the water quality stable and reduce the operation costs significantly.

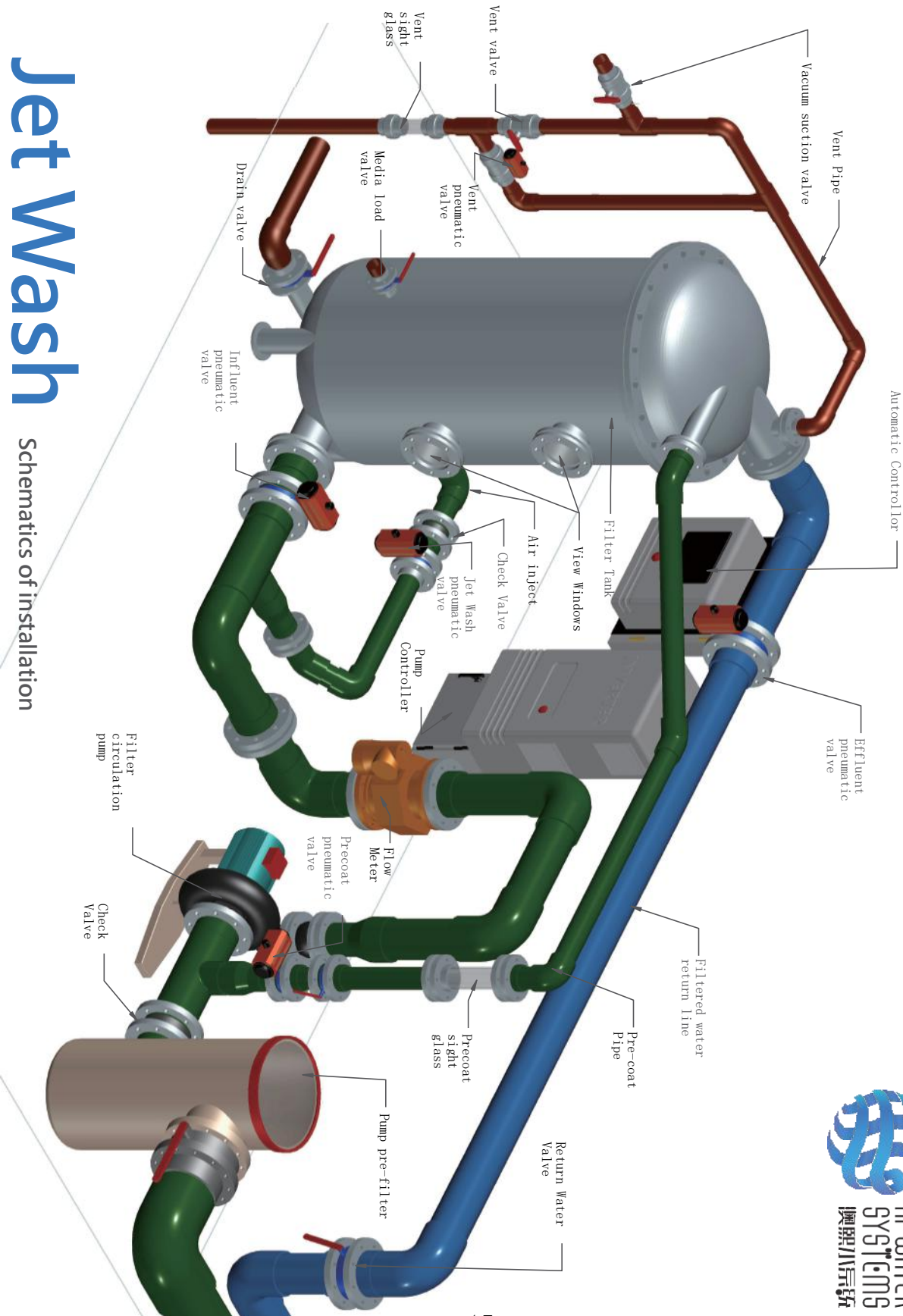
AF Water Control® Automatic Water Treatment System automatically records the data of the operation, and features with alarm function. Any abnormality picked up by the system will trigger the alarm, and an instant alert message to the operators by email or mobile phone. the operators can login the system remotely, and utilize the system log or chart for trouble shooting, fix the problem and close the alarm. It helps the operators to control and manage the stability of the system in a timely manner.

Featured with internet and remote monitoring control,AF Water Control® Automatic Water Treatment System is accessible through various connections such as mobile phones, tablets, computers and so on. A master account can manage several operators, allowing multiple visits to the device at the same time; meanwhile, a master account can connect to multiple devices for general management as well.



Jet Wash

Schematics of installation



Show Cases

Appreciation of wonderful cases



Show Cases

Appreciation of wonderful cases





Show Cases

Appreciation of wonderful cases



Show Cases

Appreciation of wonderful cases



Show Cases

Appreciation of wonderful cases





AF WATER
SYSTEMS
澳熙水系统

EXPERIENCE MAKES DIFFERENCE



QR Code of Website



WeChat QR
Code

Phone#: 18038817925 Skype:faye.chen511

E-mail Address: info@af-water.com

Website: www.af-water.com

Address: No. 19 Zhangcha Fourth Road, Foshan,
Guangdong, China